

**HLT42307  
Certificate IV in  
Population Health**



# Working in Population Health

Working with communities to maintain and promote the health and well being of that community.



# Population Health Approach

Addressing factors  
that determine health  
of the community

Environmental

socio-  
economic

community  
capacity

health  
behaviours

person-  
related  
factors



# Strategies to achieve health outcomes

Policy

Legislation and regulation

Social marketing

Environmental change

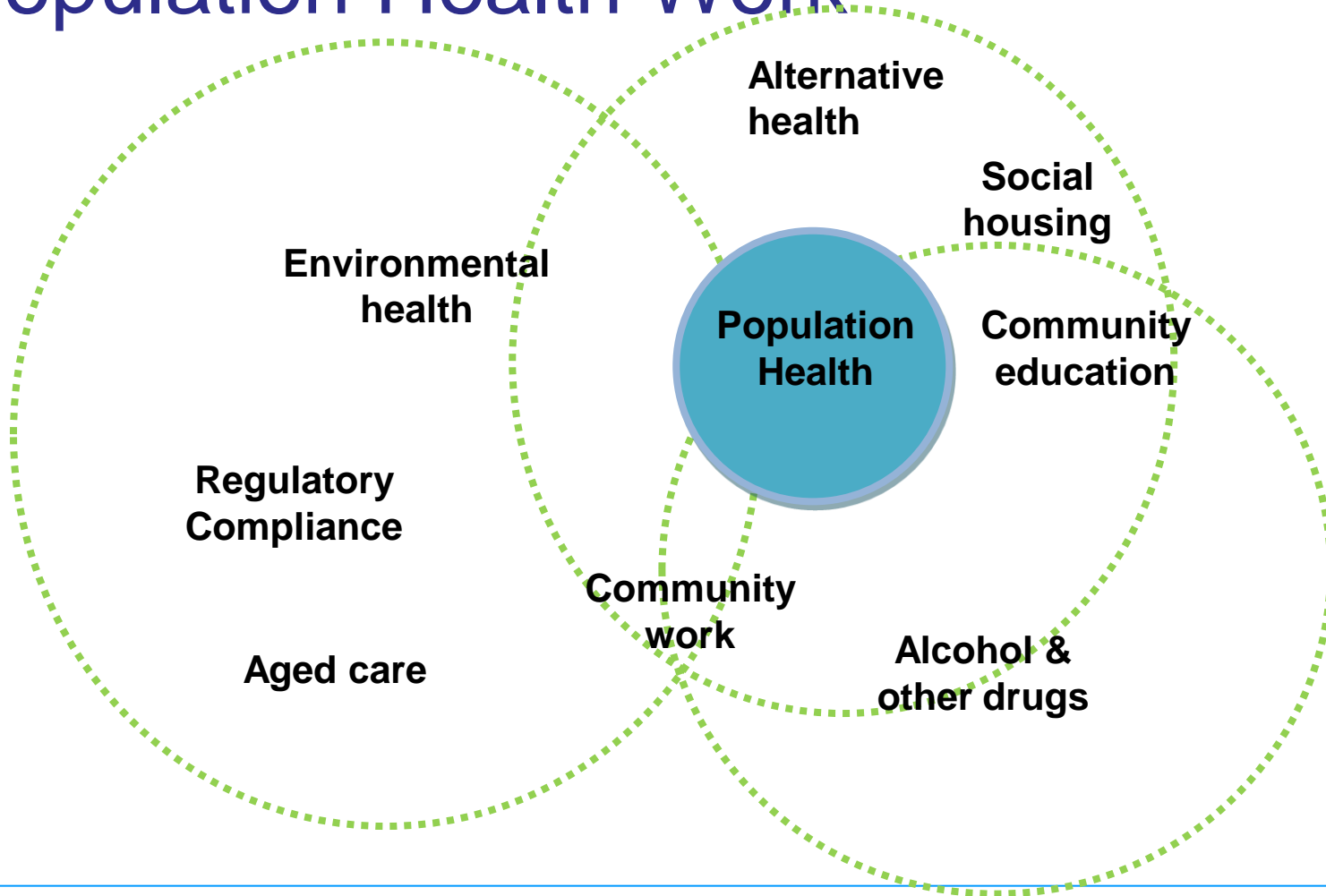
Organisational and community development

Surveillance

Disease control



# Population Health Work





# Introduction to the Population Health Qualification Framework



# The Population Health Qualification Framework

Australian Quality Training Framework (AQTF)

Health Training Package (HLT07)

**Population Health Qualifications →  
Certificate II to Diploma**



# Vocational Education and Training (VET)

Education  
and Training  
for work

Recognises  
alternative  
methods to  
learning



# Competency can be achieved:

**on the job**

**self-study**

**structured  
course**

**Internet**

**Computer**

**at home.**



# Training Packages

Sets of nationally endorsed components for training and recognising people's skills.





# Competency Standards

Describe the work someone performs and the standards to which they are expected to be perform



# Assessment



<b>on-the-job</b>
<b>off-the-job</b>
<b>combination of training and recognition</b>



# HLT42307 Certificate IV in Population Health

## Learner guide



# Certificate IV in Population Health

**19 units of  
competency**



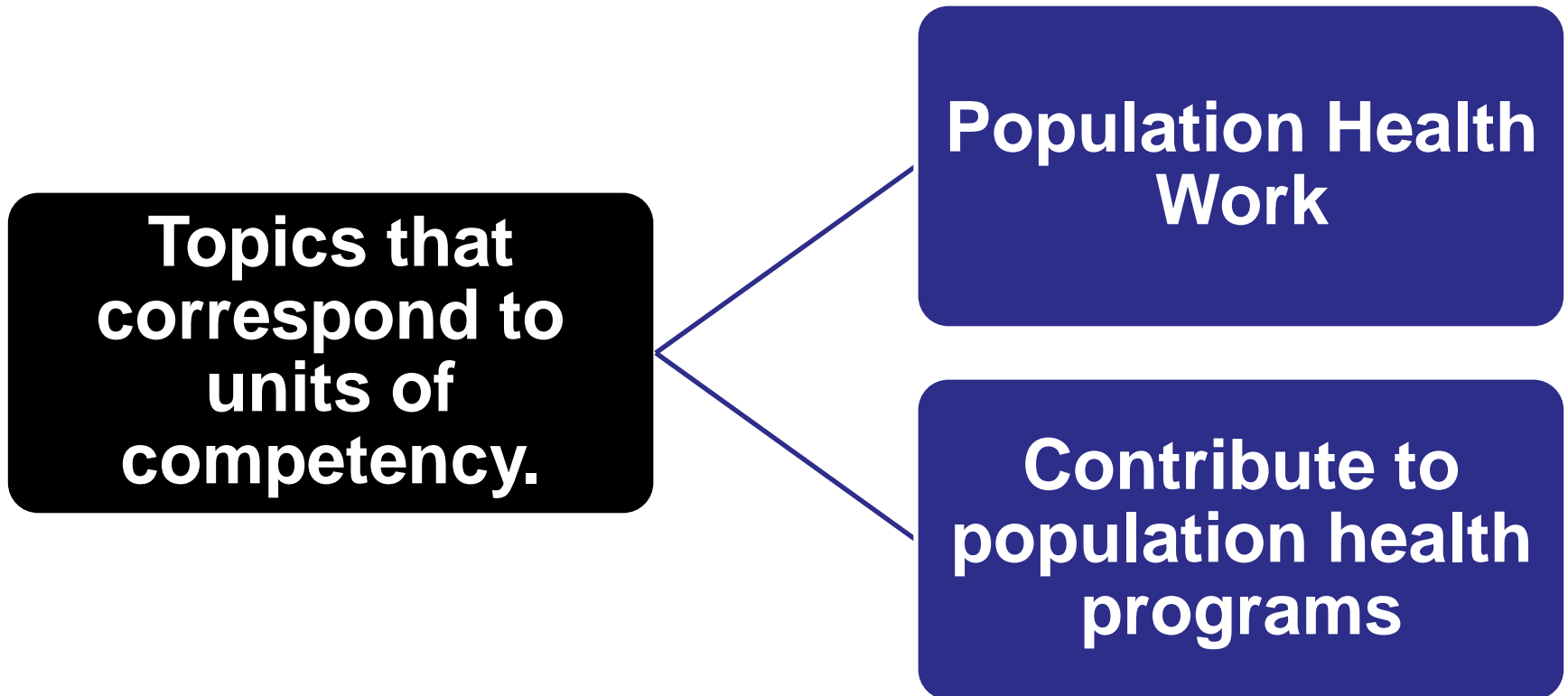
**10 compulsory units**



**9 elective units**



# Learning Guide Structure





## Activities



The Learners' Guide also contains things to do – activities. Activities involve talking with other learners, drawing and writing. The facilitator will help to explain the activities.

Activities may contribute to assessment. They are shown by the symbol on the left.



# Self Assessment Check List

**The knowledge and skills you will be assessed against**

**Tick if you have covered this information and if you feel ready to undertake assessment.**



# Topics and Units of Competency

Section 1: Organisational requirements

Section 2: Work effectively with colleagues and clients

Section 3: Plan, promote, implement, evaluate and promote a range of population health initiatives

Section 4: Provide specialist education

Section 5: Smoking cessation